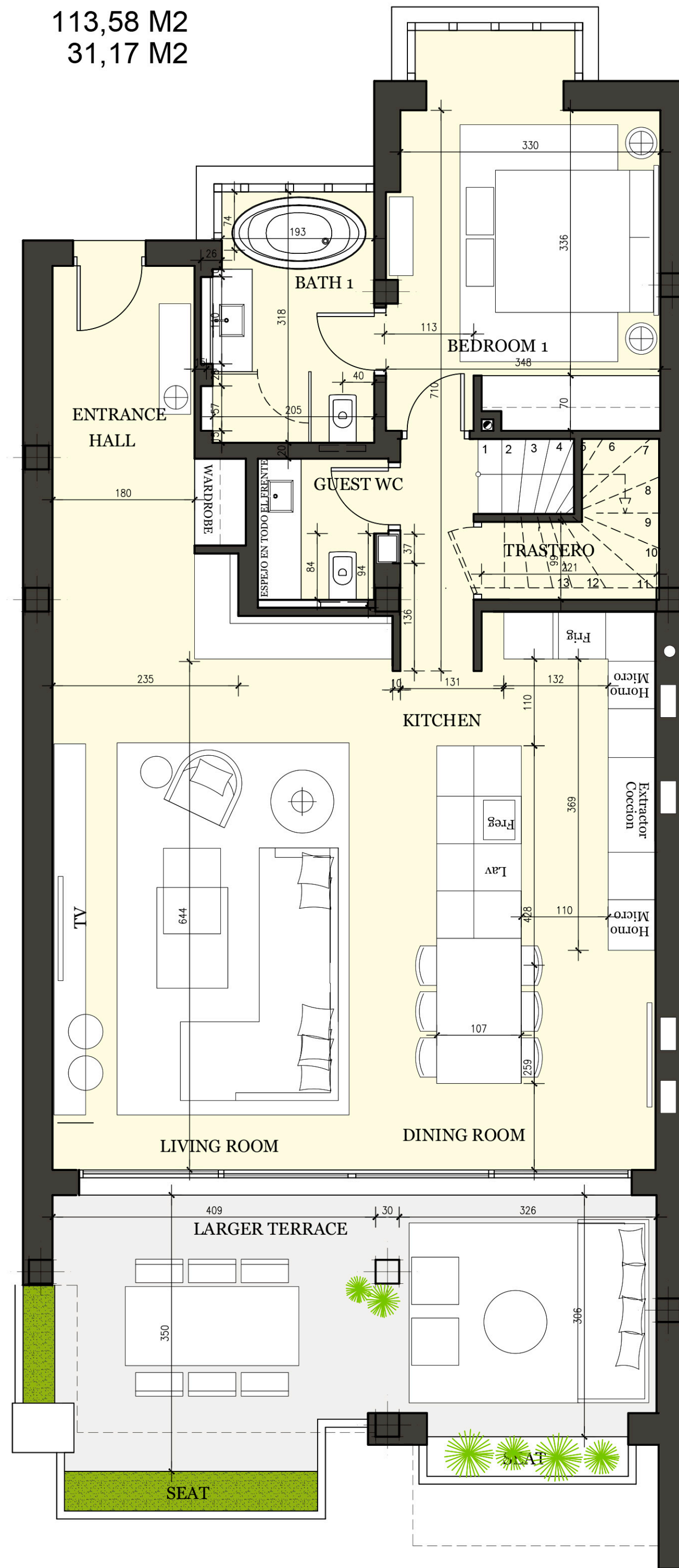


LOWER FLOOR

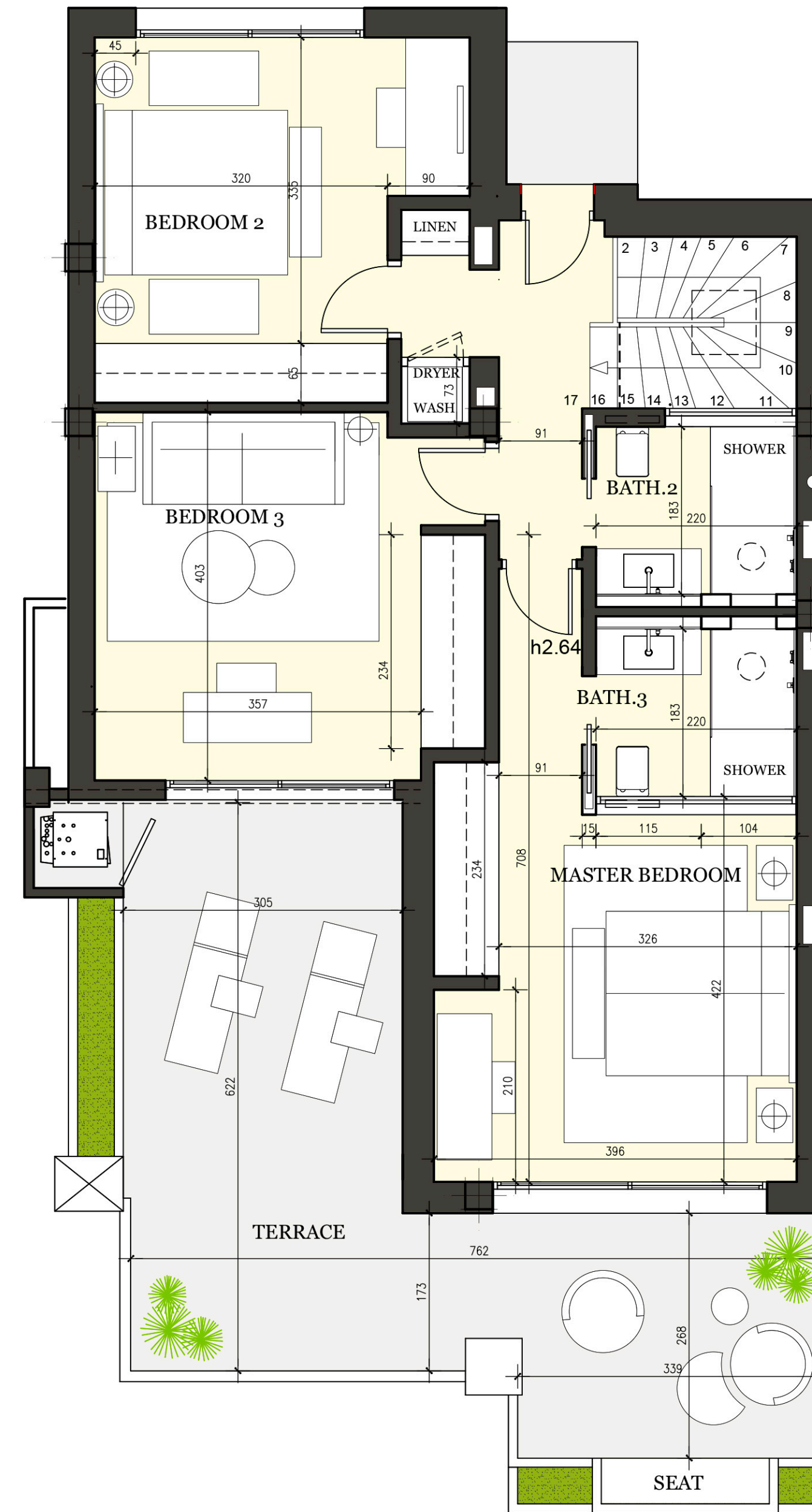
BUILT SURFACE
TERRACES

113,58 M2
31,17 M2



UPPER FLOOR
BUILT SURFACE
TERRACES

86,15 M2
36,63M2



ESTADO MODIFICADO		Ficus 31
Date:	18 04 2022	Jardin Andaluz
Scale:	e: 1/50	Marina del Puente Marbella Málaga